



UNDERSTAND MICROSOFT POWER PLATFORM

WHITEPAPER

DISCOVER HOW BUSINESSES ARE
MEETING CHALLENGES AND
ADDING STRATEGIC VALUE WITH
MICROSOFT POWER PLATFORM
SOLUTIONS

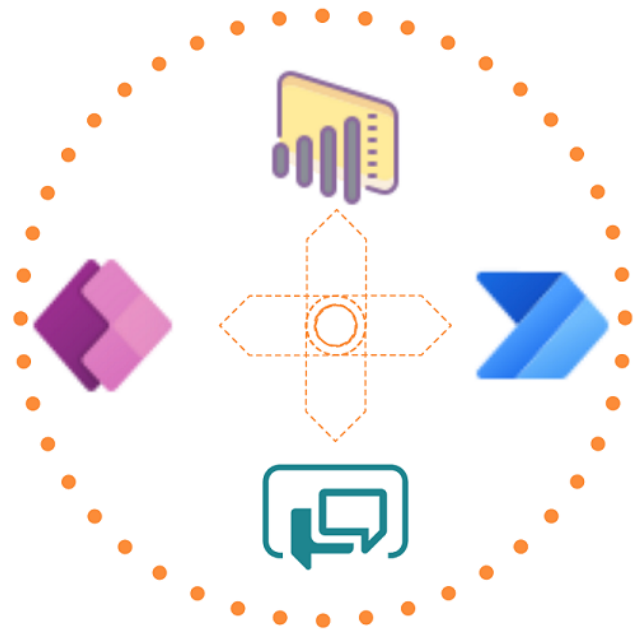


INTRODUCTION

In this digital age, we are heavily dependent on data, and the amount of data that businesses generate is increasing. The development teams are eagerly trying to bring together the critical touchpoints to develop solutions faster, gain up-to-date insights to scale performance while automating repetitive tasks. If you are using valuable resources inside or outside your company, it can be time-consuming and cost a lot, if it is not optimized for your business goals with smarter solutions.

LESS CODE, POWERFUL & INNOVATIVE

Power Platform enables the democratization of data and open access to digital information. The complexity and flexibility of custom coding are unacceptable in this fast-forward world, and most businesses need an easy way to generate, automate, or analyze data in a way that is easy yet efficient. This is why Power Platform is so attractive.



Microsoft Power Platform is a family of products provided by Microsoft and ZiniosEdge is a Power Apps solution development partner to help organizations spell innovation.

We help you to develop and create complex business solutions, analyze and visualize data, automate business processes & create virtual agents with power platform. All of these products provide a low/no-code platform. And are presented in a simple graphical interface format that can be used by any business user or developer, thereby reducing the need for IT within the organization.



Power BI



Power Apps



Power Automate



Power Virtual Agents

ZiniosEdge being a PowerApps solution development partner, help businesses to integrate Power Platform into their environment to solve a wide range of business problems, from small to large and enable them to leverage the platform to innovate faster specifically these three goals.

Network Effects- Data services establish a single source of truth for stored data and create application experiences with the data based on specific use cases.

Standardization- Establish a single ecosystem where multiple workloads can live, work, and are protected.

Return on Investment- Workloads running on different platforms or applications result in separate licensing costs. When you consume it, the cost will increase. Power Platform recommends spending more to increase the ROI of your licensing investment.

IDEAL TO SCALE

INTUITIVE TO USE & EASY TO LEARN

The Power Platform is created by Common Data Services (or CDS) and "Power Platform" is the full term for four Microsoft products Power BI, PowerApps, Power Automate and Power Virtual Agents.



Power BI



Power Apps



Power Automate



Power BI

Business analytics tool that allows you to easily connect to data sources to create visualizations and quickly gain business insights

Low-code approach to custom app development that allows users to quickly build apps with a point-and-click approach.

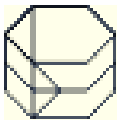
Enables business users to automate workflows within their organization without writing code.

Develop a flexible chatbot that can communicate with external clients.

EMPOWER WITH POWER PLATFORM APPS



AI Builder



Dataverse



Data
connectors

Classification

Power Platform

Traditional Solutions

Application Development	Create rich business applications without writing large amounts of code.	Requires high-level coding and additional skills
UI Personalization	Frequently used controls are available, and new controls are added regularly.	Detailed control of various layouts, user experience, and extensive control libraries.
Flexible Design	Cross-Platform support design that allows you to develop and use apps from anywhere and any device.	Framework support (such as Bootstrap) and efforts to achieve responsive layout are needed. Often need to develop a native mobile application.
Integrate and Implement	Take advantage of ready-to-use connectors available from Microsoft.	It's a lot of work and often requires a third-party product with a connector.
Adaptability	To interact with external websites, use business intelligence.	Frameworks offer complete flexibility.
Automation	Simplify decision making by automating notifications, data collection and approval	Custom implementation needed as an alternative for workflow integration
Data Representation	Advanced reporting and dashboard feature providing insight and data visualization via Power-BI.	Complicated to visualize using JavaScript report library (e.D3).

POWER BI

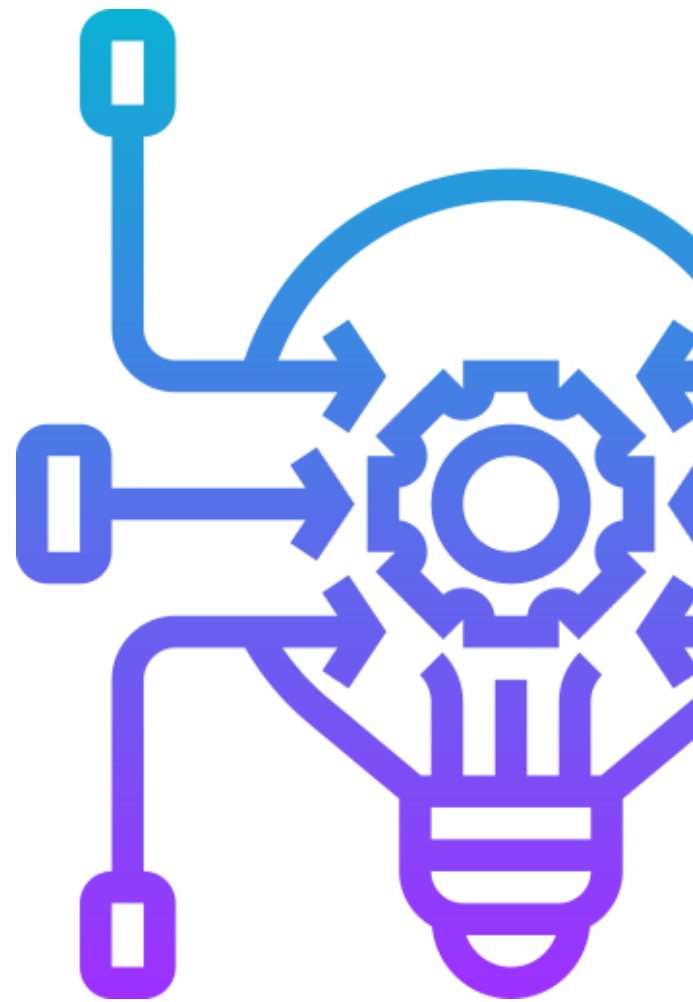
Power BI is Microsoft's business analysis service designed to provide interactive visualization and business intelligence capabilities with an interface simple enough for end-users to create their reports and dashboards.

RIGHT INSIGHTS
RIGHT ACTIONS

FEATURES

- Uncover actionable insights
- Superior accessibility
- No upfront costs
- Drag-and-drop functionality
- Meaningful reports
- Powerful connectivity
- Embeddable attributes
- Data refresh
- Continuous updates

GET
UP-TO-THE-
MINUTE
INSIGHTS



VERSIONS

1. Microsoft Power BI Desktop: Free report authoring and ad-hoc data exploration. Offers easy-to-use self-service analytics for personal use.
2. Microsoft Power BI Pro: Quick, easy-to-use self-service analytics for users requiring collaboration, dashboard sharing, ad hoc analysis, and report publishing.
3. Microsoft Power BI Premium: An add-on to Power BI Pro for projects requiring large scale data, demanding performance, and the ability to distribute content without requiring per-user licensing.



Power BI

A PLATFORM FOR ALL YOUR DATA FROM A SINGLE SOURCE OF TRUTH

BENEFITS

1. Personalized Dashboards - Provide a unified user experience with the customized dashboards & reports that meet your exact needs.
2. Secure Report Publishing - Set up automatic data refresh & rapidly publish reports, allowing all the users to avail the latest information.
3. No Memory & Speed Constraints - Quickly retrieve and analyze your data eliminating any memory & speed constraints.
4. Integrates seamlessly with Existing Applications - Adopt analytics & reporting capabilities easily to embed interactive visuals quickly in your applications.
5. No specialized Technical Support required - Leverage the benefit of agile inquiry and analysis that Power BI offers, eliminating the need for technical support.
6. Extract Intelligence Rapidly & Accurately - Transform your Enterprise data into rich visuals & accurate reports for enhanced decision making.
7. Balanced Simplicity and Performance - In-memory analysis technology & DAX scripting language offers balanced simplicity and performance.
8. Integrated Data Services Support - Integrates seamlessly with advanced cloud services like Cortana to deliver the results of verbal data requests.

USE CASE STUDY:

Inventory optimization using Power BI

Power BI helps you determine inventory turnover, inventory-to-purchase ratio, slow-moving inventory, and total return on investment (GMROI) by manufacturer, equipment, or location. First, determine the stock available for your product. You can use production and expiration dates, prices, and lot numbers to make the type of inventory required

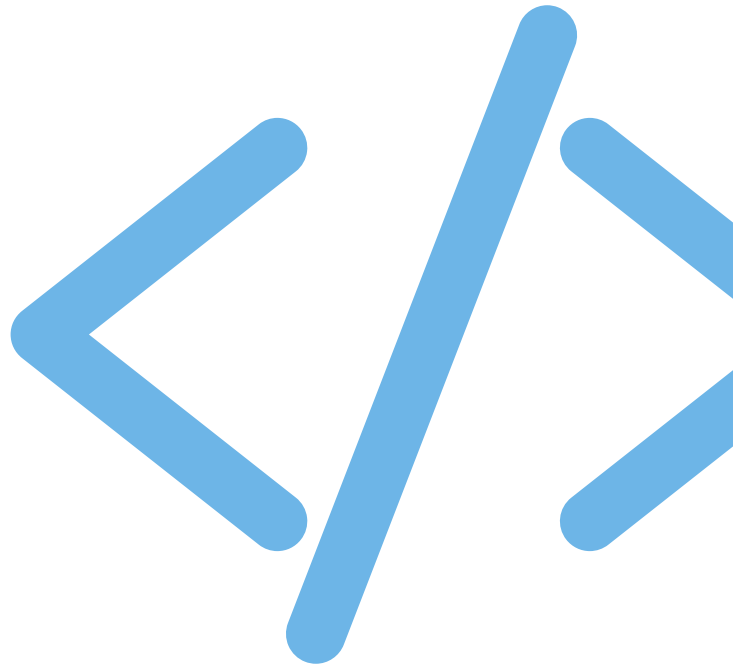
SOLUTIONS

- Detailed reports on excess, understock and inventory
- Information on purchasing and stocking /stocking products/raw materials
- Inventory elimination plan and overall inventory improvement
- Multi-warehouse inventory report
- To track budgets and procurement plans in different warehouses

TRY POWER BI

POWER APPS

PowerApps is a tool that allows you to build custom apps that leverage many features of Office 365 and Microsoft platform tools, providing an exciting opportunity to build custom apps that drive automation and generate business gain



FEATURES

- Wide availability
- Better data integration
- Automated functions
- Guaranteed security
- Higher Productivity
- Capture and move data between systems
- Build screens and interfaces
- Build visual apps that mashup data
- Search, find and action work
- Work with or without a wi-fi/mobile data connection
- Kickoff a Flow from a mobile app

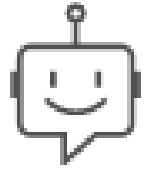
VERSIONS

1. Custom web and mobile applications built specifically for your organization by combining your internal power platform with Citizen developers or Microsoft partners.
2. Mission Ready to Use Applications (COTS), also known as "ISV apps," are designed by Microsoft partners for specific common use cases. They run cross-platform and are usually available from AppSource.
3. Dynamics 365 (D365) is Microsoft's comprehensive business application suite for daily business requirements such as customer relationship management (CRM), sales, marketing automation, and field services.

BUILD BUSINESS-GRADE
APPS WITH NATURAL
LANGUAGE CODING EASILY



BUILT-IN COGNITIVE SERVICES



BENEFITS

1. Solve business challenges: If you don't have a standard solution, Microsoft Power Apps can provide a solution dedicated to solving your business challenges. Allows the business organization to manage all your business processes on a single platform.
2. Low-code approach: Deploy applications much faster than traditional development methods.
3. Mobile access: the application is designed to be accessible from any device and anywhere. Enables you to connect and work on your desktop, tablet or mobile device as needed.
4. Cost-effective: Traditional application development can be expensive and time-consuming compared to Power Apps.
5. Integration with Microsoft products: Access for seamless connectivity with other platforms to simplify your day-to-day business processes.
6. Security: Implemented features that ensure the security of your apps and allow you to grant permissions as needed.
7. Designed for all types of users: Allows all types of users to design and develop business applications that solve existing problems without the need for key technical skills.
8. Reduces the reliance on third-party tools: Eliminates the need for separate software and maintenance licenses.

USE CASE STUDY:

Know your client' system

Know your customer (KYC) is often used by companies as a regular process to gather the right data and hire new customers, suppliers, and salespeople. KYC can request company information from external databases and perform credit checks. There's a lot that can be automated, but it's often possible to speed up the process with PowerApps integrations.

BUILD LOW-CODE APPS & FORMS THAT ENHANCE INNOVATION

SOLUTIONS

- Custom form fields are created for each new form type, and the resulting database can be saved to the CDS.
- Last day notifications and reminders for all participants.

POWER AUTOMATE

Microsoft Power Automate is an Office 365 tool focused on increasing employee productivity by automating multiple tasks and combining different applications and services in the cloud. Creating these automated workflows enables you to receive notifications, sync files, and collect data

FOCUS ON WHAT'S IMPORTANT!

FEATURES

- Schedule Automated Tasks
- Trigger automation when data changes
- Start an Automation with a Flow Button
- Leverage data in different systems
- Automate repetitive (manual) tasks
- Capture Approvals
- Create Notifications and Alerts
- Accessible anywhere
- Use predefined templates to create a flow
- Save time with decision making
- Increase employee satisfaction and reduce human error
- Automate tasks across business systems
- Improve workforce productivity
- Streamline everyday tasks



CONNECTORS

1. **Triggers** -Workflow starts with triggers. When a new document is saved or a new video on the YouTube channel, a notification is triggered. Each connector has at least one trigger.
2. **Action** - If the process is complete, each thread has one or more actions, such as uploading a file to OneDrive, starting an approval process, or receiving an email from a specific person.
3. **Connection** - The third entry refers to the connection of two applications. This is because the tool requires credentials for each app it connects to. They are encrypted with Microsoft security and can be easily deleted when needed.

ENHANCE WORKFLOWS WITH AI

Power Automate



BENEFITS

1. Pop-up Alerts: Get instant notifications for important emails or announcements
2. Tracing Footmarks: Track and catch up with new leads
3. Programmed repository: Automatically archive email attachments on OneDrive or SharePoint
4. Socially Active: Engage with social media. Receive automatic notifications on your mobile phone. For example, when you receive event notification from Instagram.
5. Regulate Authorized Prompts: Automate approval processes like leave requests or document approvals. Once approved, employees can be notified via Teams.
6. Application Integration: Both API-based integration and user interface-based integration can automate the flow between applications.
7. Cognitive Services: Available from Power Automate, Cognitive Services offers a variety of language-related services. These include language detection, text recognition, sentiment analysis, and keyword phrase extraction.
8. Coordinate with Legacy Applications: Robotic streams can be recorded and played back with legacy software for integration when the API interface is not available.

USE CASE STUDY:

Event Notification using Power Automate

Microsoft Power Automate offers a solitary robotization stage inside Microsoft's Business Application Platform that incorporates Power BI and Power Apps. Consequently, making a Microsoft To-Do and Microsoft Power Automate venture includes an event in Google Calendar. Another mechanization takes this schedule occasion and makes a page for it on OneNote. These are basic models. Microsoft Power Automate gives you a whole library of formats to browse. On the other hand, basically, make your own format without any preparation by just building the event flow by dragging and dropping functionality.

SOLUTIONS

- Implement automation with little or no development technology knowledge
- Apply automated workflows from predefined templates.
- Sophisticated activation with or without monitoring of conditions for your business.
- Workflow-Integration with Office365, Slack, Dropbox as well as native ecosystems.
- App Legacy without APIs or connectors is all in the cloud, so you can quickly scale as its business processes grow.

POWER VIRTUAL AGENTS

The integration of Virtual Agent and AI Builder allows you to integrate chatbots with other systems in your organization. You can activate workflows to get the information you need or add the information provided and send it to the relevant system to improve customer service. With Power Virtual Agents, you can create bots that help you answer questions from customers, employees, or website visitors in real-time.

PERSONALISE CONVERSATIONS

FEATURES

- Effectively make your own virtual bot
- Enable virtual assistants to make a move
- Measure execution

BUILD AI-POWERED CHATBOTS EASILY

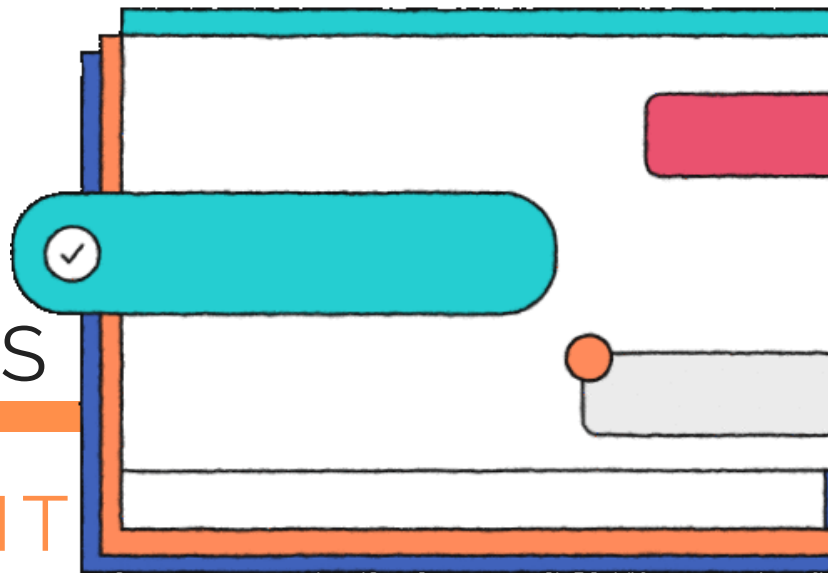


BENEFITS

1. Professional Developer Inputs: Allows professionals in the field to create and organize bots easily.
2. Flexible for constant updates: With the easy one-click switch from the analysis screen to the design pane (or vice versa), the analysis is immediately available to notify you of any design changes you need.
3. Create smarter bots: Monitor and improve chatbot performance by getting recommendations from AI - data-driven support systems.
4. Collaborate with resources: Ease of integration with other parts of PowerAutomate allows you to create bots to improve your true value-added business processes.
5. Manual Assistance Control: Power Virtual Agent has a wireless interface for non-IT professionals, but software developers can continue to use Power Virtual Agent using traditional cryptographic environments. Ownership and management for non-IT professionals.

POWER VIRTUAL AGENTS

PUT INTELLIGENT CHATBOTS TO WORK FOR YOU



SOLUTIONS

- Self-service for IT help desk staff and HR.
- HR or IT help desk automation that allows users to perform simple transactions and retrieve information.
- Users do advanced research using guided conversations instead of more complicated search interfaces.
- Learning and growing, Empowering people and connecting with learning opportunities.
- Governance change manager, Provides insight into future organizational changes.
- Digital assistant to assist in the onboarding process for new employees.

CONTACT US



MG Road 4th Floor, Gopalakrishna
Complex, 45/3 Residency Road, Bangalore
India
Phone: +91 984 594 5140
Email: sales@ziniosedge.com

USE CASE STUDY:

Virtual Assistant Chat -Remote Monitoring

Switching to live chat with agents receiving chat history is a powerful feature, and the ability to post to multiple channels makes recruiting easy. Effectively coordinate your chatbot with the elements and controls that you use every day. Find logs, personalize chats, stream tours with live experts, call API. Explore many accessible connectors and use Power Automate to create custom workflows or use the Microsoft Bot Framework to tie together complex scenarios.

Zinios  **dge**

WWW.ZINIOSEDGE.COM



M112, Bordeaux Ct, Coppell, Texas, USA
75019
Email: Swaroop.k@ziniosedge.com
Phone: +1 469 401 6191